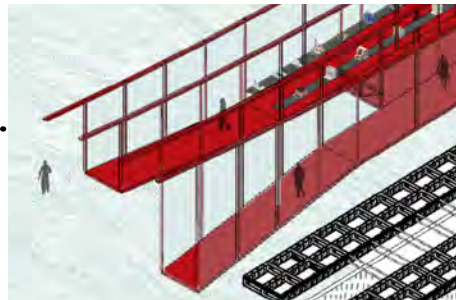


Problems & Solutions

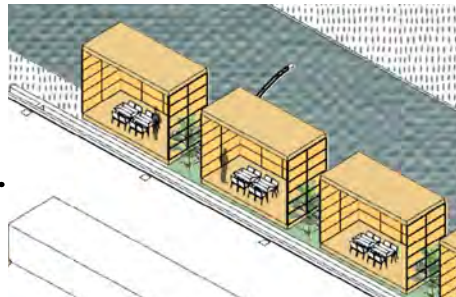
1. Students in different grades and majors **lack of communication**. The gallery bridge connects Watt hall and Harris wall which allows student to communicate and **share their projects and inspirations**.



2. Buying materials is inconvenient for students currently. Material stores are located away from campus and it is **time consuming to purchase materials**. Introducing a **new material store** in the lobby provides convenience for students especially in final period.



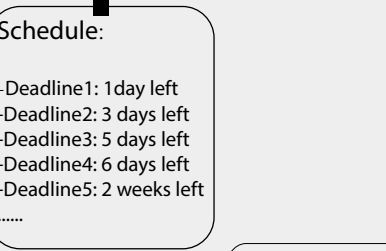
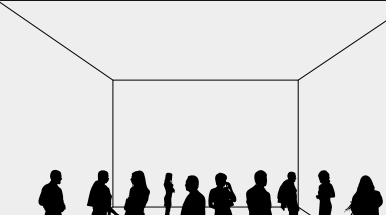
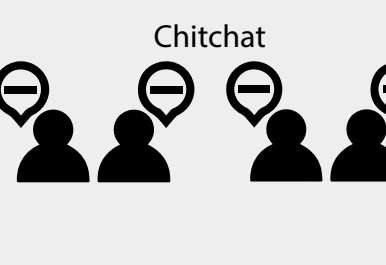
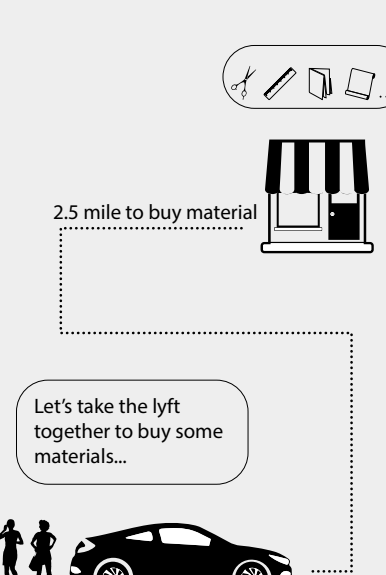
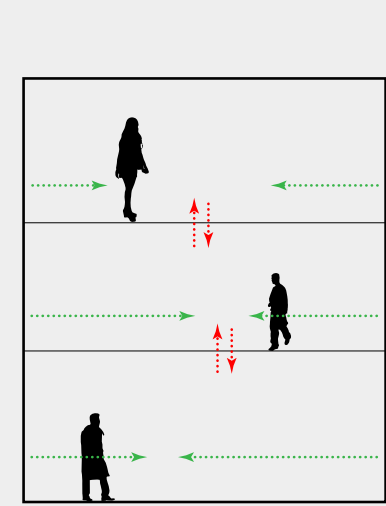
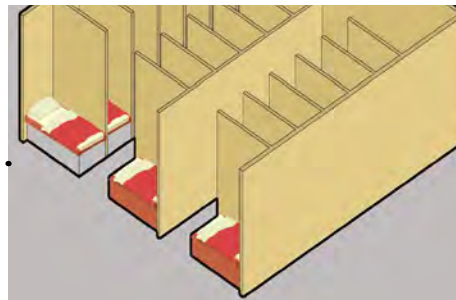
3. Professors usually **hold desk critique individually**. Students don't participate in other students' review period. Providing several review rooms in studios encourages students to **get more involved into the class and participate in discussion**.



4. Students currently **lack of exhibit space** to show their projects. Creating a lobby between Watt hall and Harris hall provides more space for students to **share their projects** with other students and visitors.



5. Architecture students **don't sleep** very often especially during finals. **Nap area** is created which works similar to capsule hotel that allows students and faculties to take a nap when they feel tired, and be **more productive** afterward.



Interweaving Archit Utopia

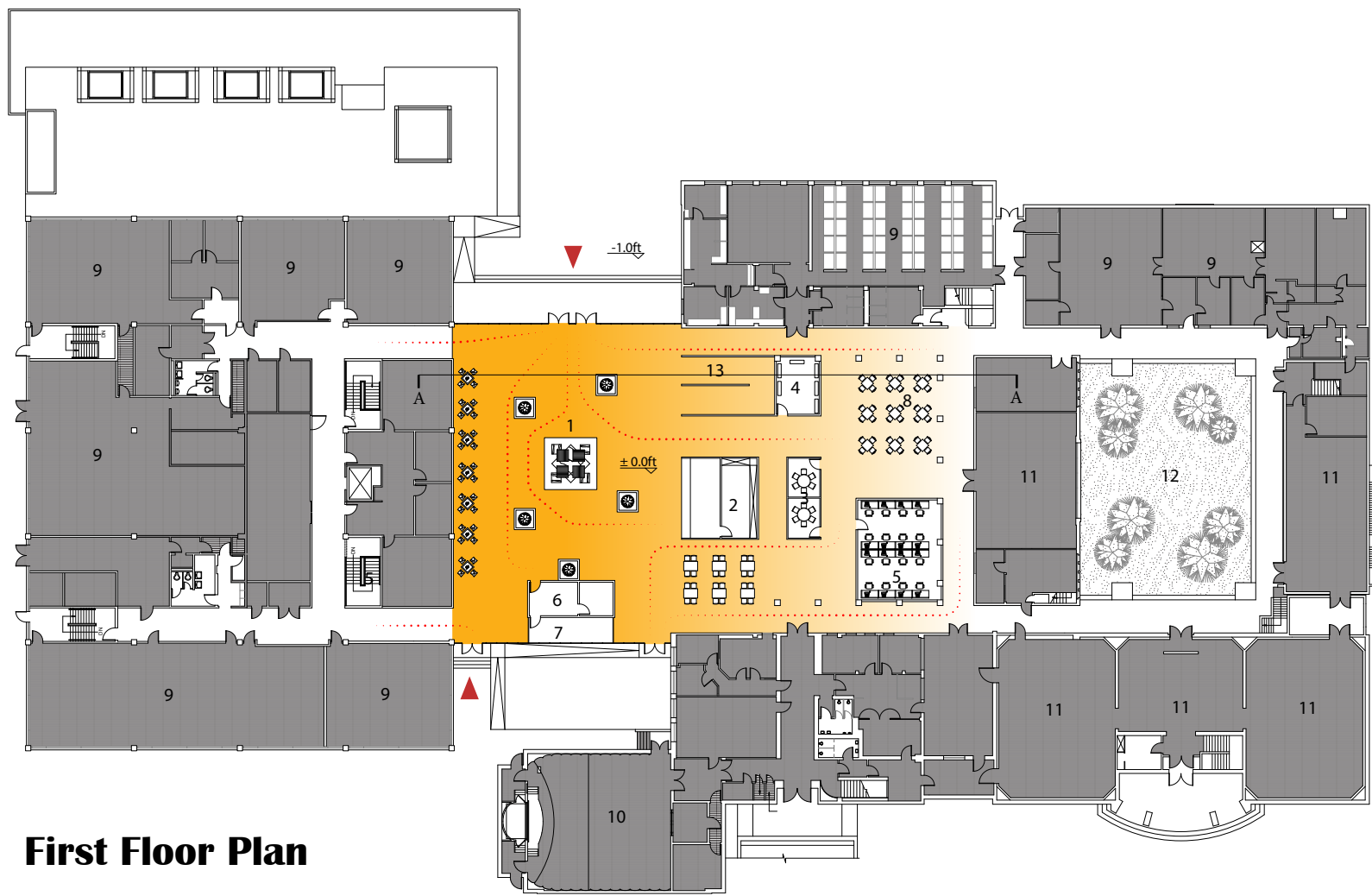
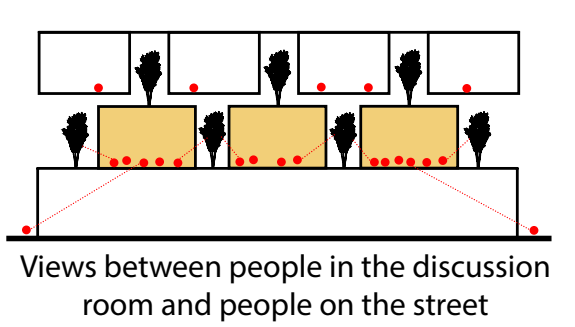
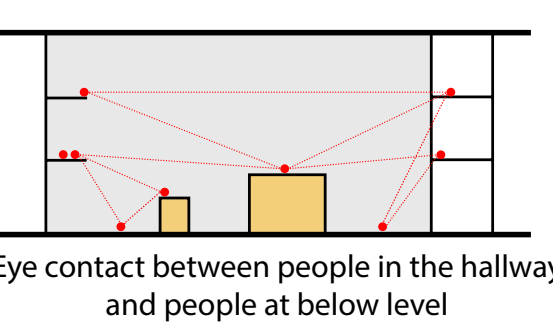
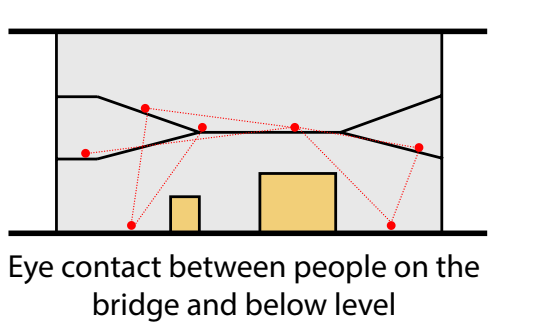
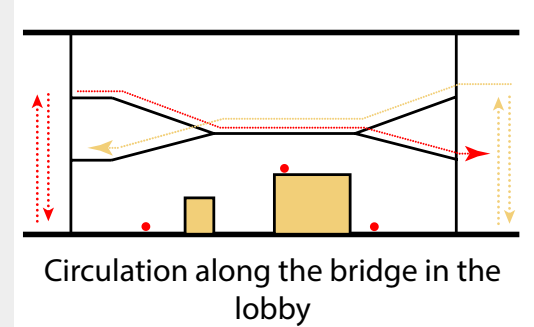
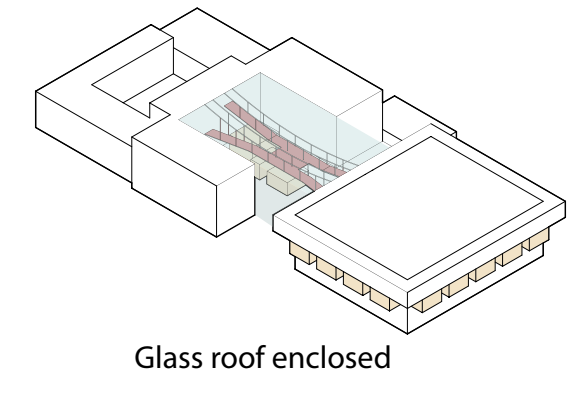
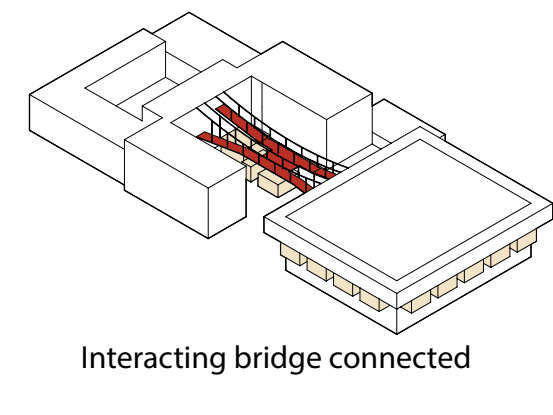
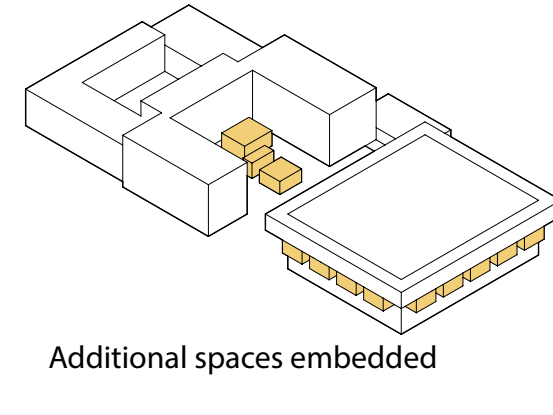
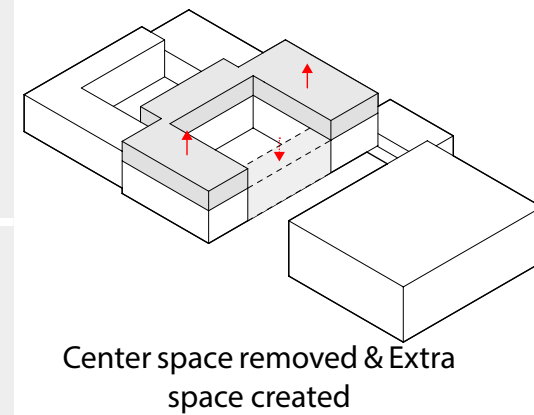
Team 1920

Interweaving Archit Utopia is a reformation design intended to create a new inspiring dream school for students learning and sharing. By **creating more multi-functional space, connecting existed halls, and providing additional opportunities**, the school of architecture is transformed to be a cradle of master architects. The **gallery bridge** is the key design of the project which adopts the relevant concept in function, aesthetics, structure, and sustainability, becoming a traffic connection of multidimensional space and gathering space for student interaction. The bridge can span east-west and **connect Watt hall and Harris hall**, recombine the multiple exhibit space, communicating space and hallways and achieve a **multi-elevation conversion**. Furthermore, the design of high performance glazed lobby at the center is an **expression of modernity and futurism**. Here, students with different cultural background are invited to share their ideas. Space are created to maximize flexibility of school schedule, and life are enriched with dreams and crazy thoughts.

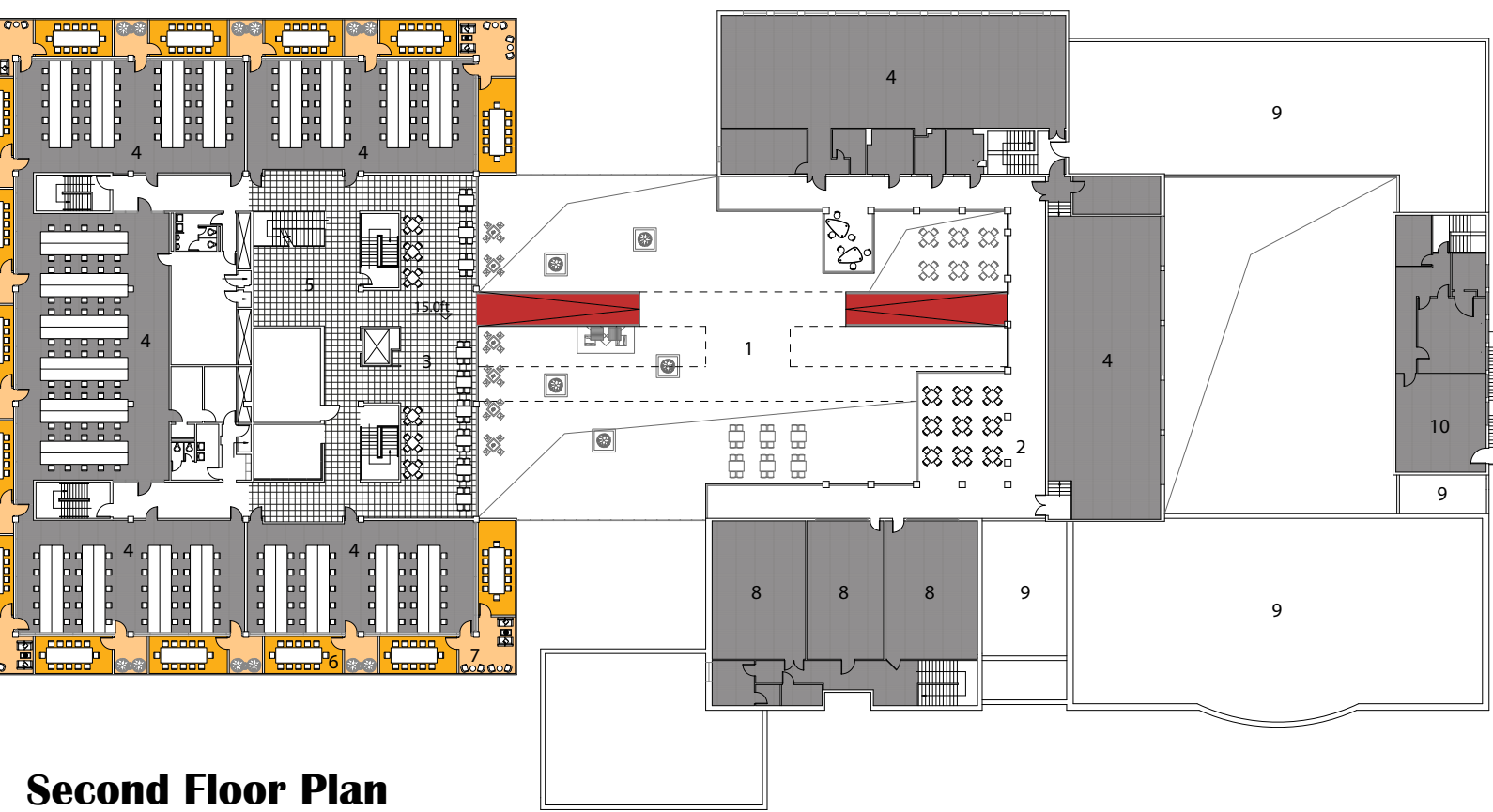
Site Plan



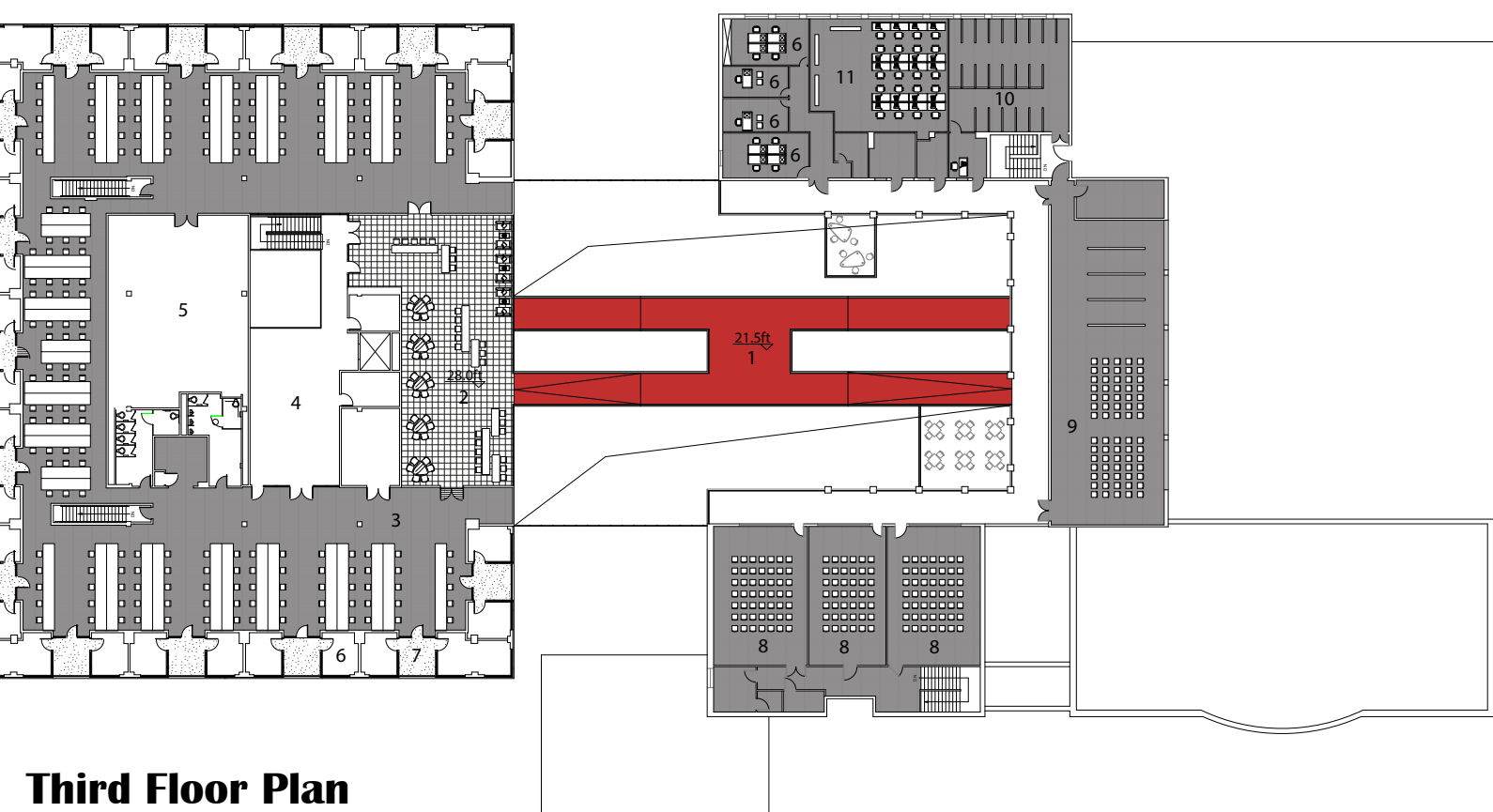
Concept Diagrams



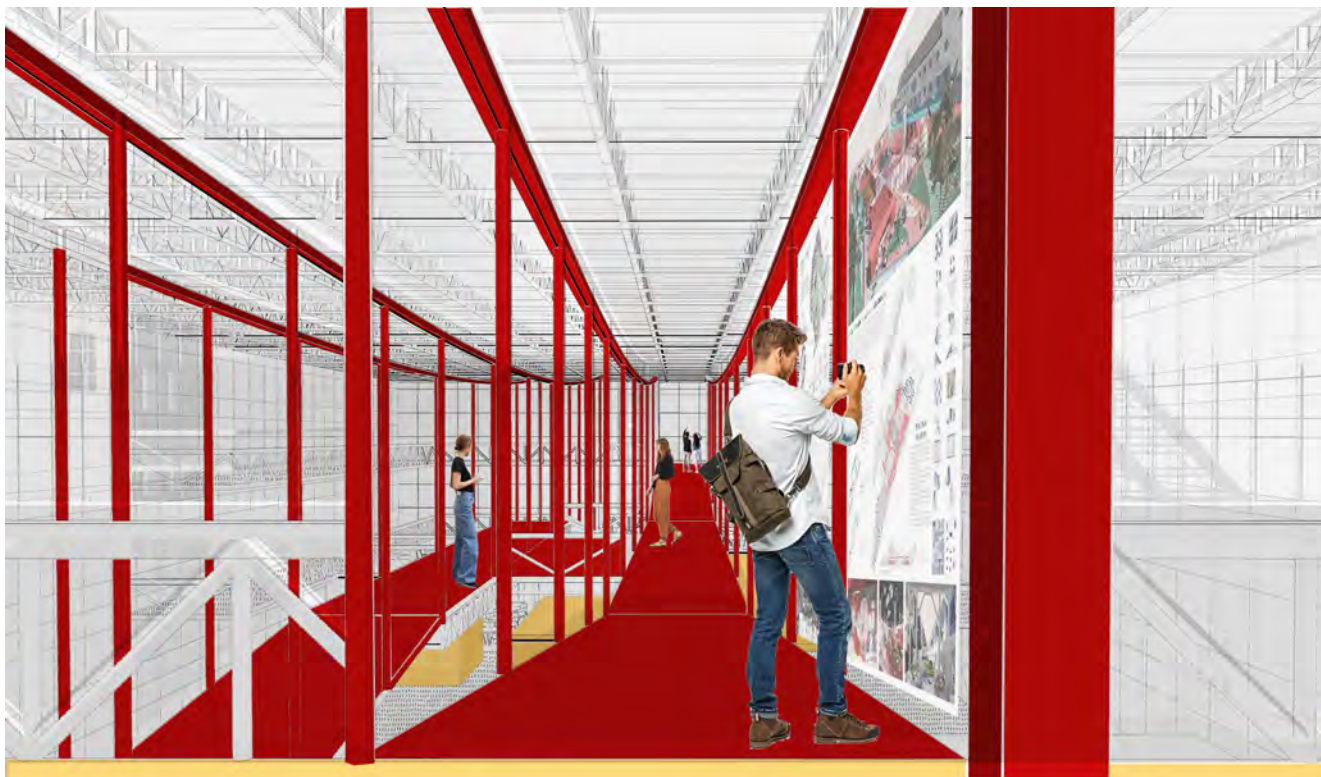
First Floor Plan



Second Floor Plan



Third Floor Plan



Gallery Bridge View



Lobby View

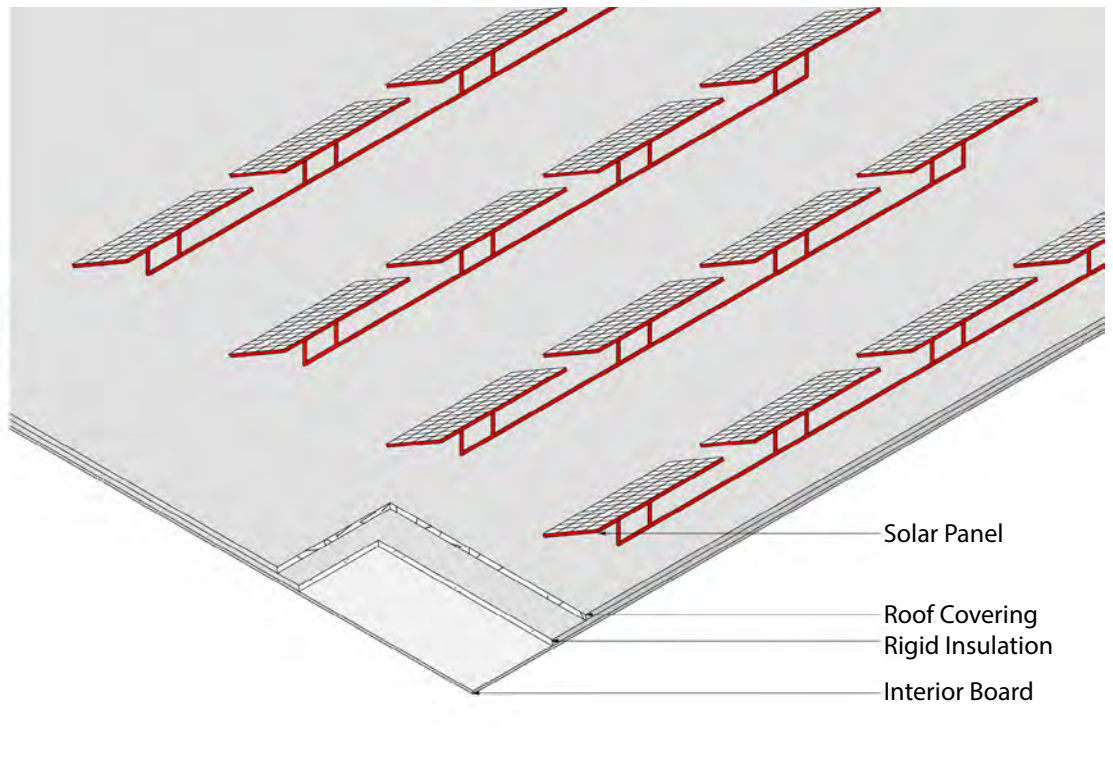
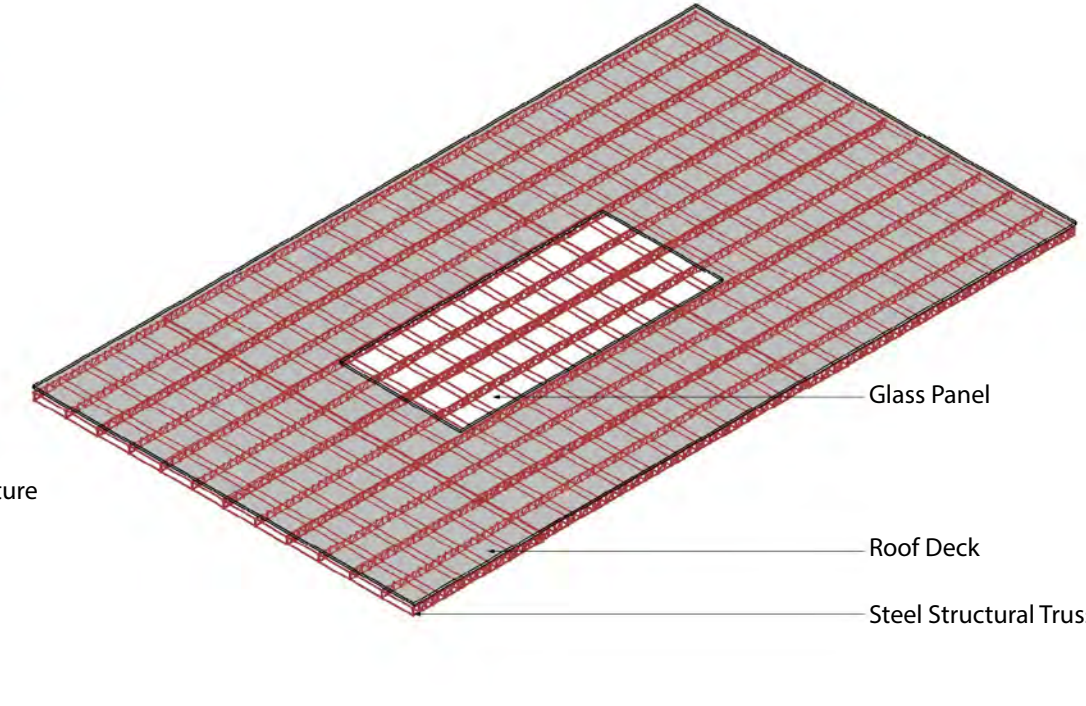
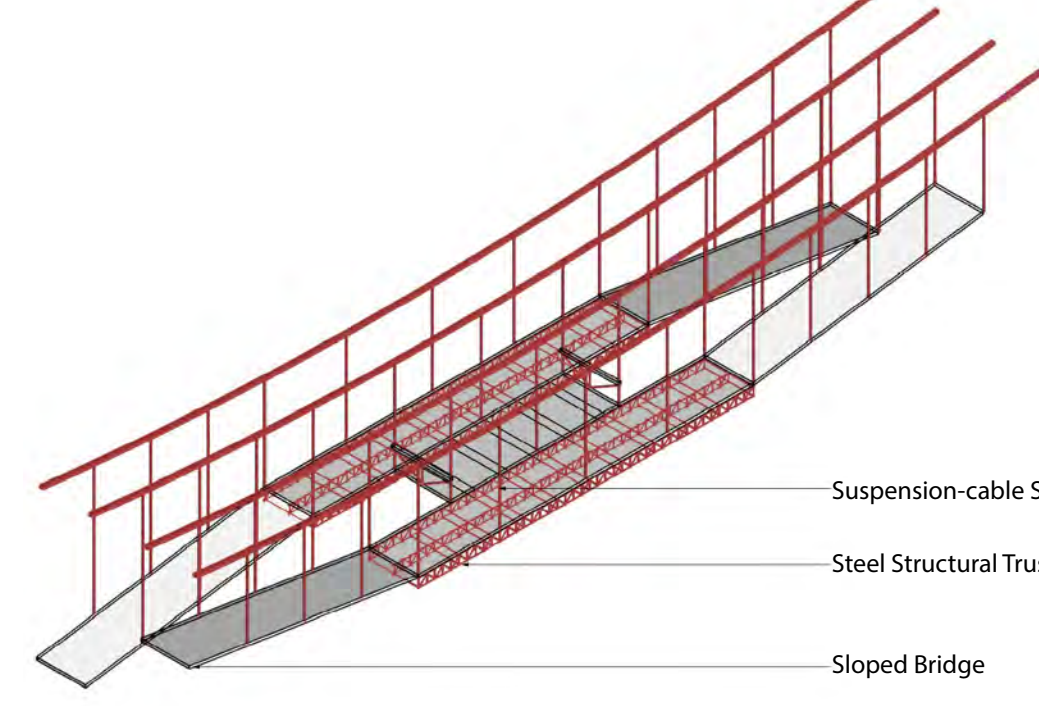


Self-Study Area View

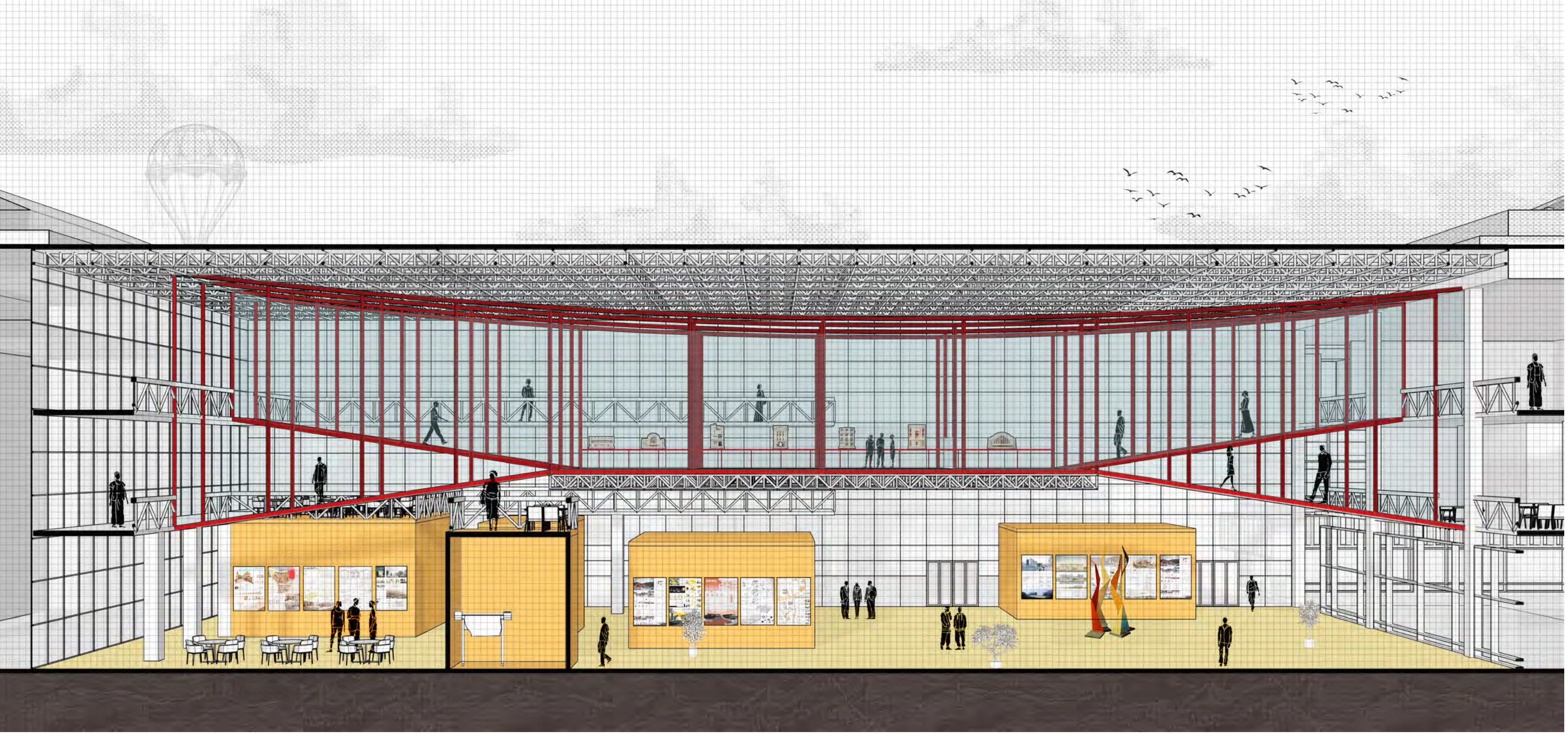


Floating Deck View

Structure Details



Section AA



North Elevation

